



# Zoning Map (Residential)

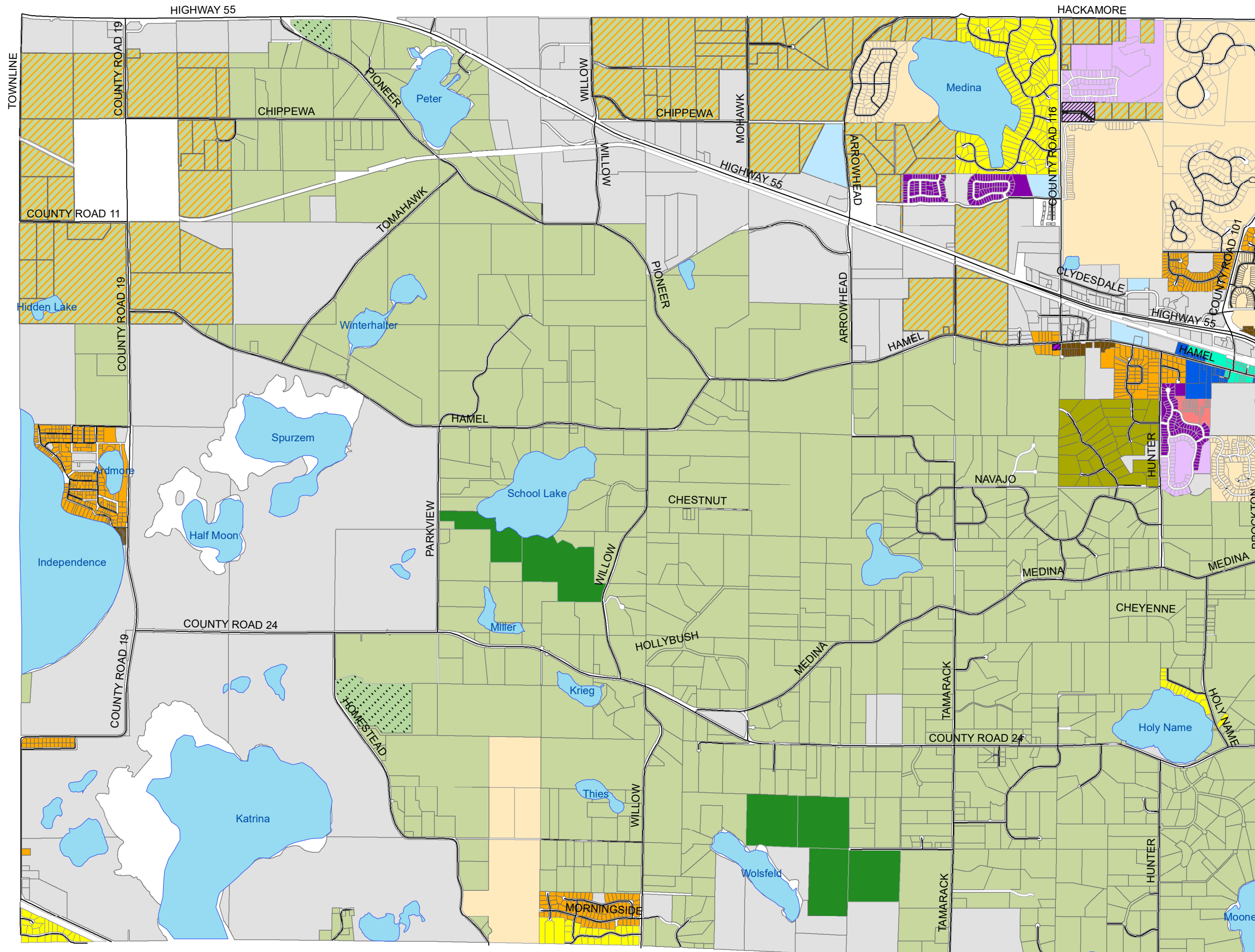
## Legend

- Non-Residential (see reverse)
- Agricultural Preserve (AG)
- Rural Residential (RR)
- Rural Residential 1 (RR1)
- Rural Residential 2 (RR-2)
- Rural Residential-Urban Reserve (RR-UR)
- Suburban Residential (SR)
- Urban Residential (UR)
- Single Family Residential (R1)
- R1 - rezoning pending
- Single and Two-Family Residential (R2)
- R2 - rezoning pending
- Residential-Mid Density (R3)
- Multiple Family Residential (MR)
- Mixed Use (MU)
- Uptown Hamel 1 (UH-1)
- Uptown Hamel 2 (UH-2)
- Planned Unit Development (PUD)

Please contact the Planning Department  
(763-473-4643) for more information  
regarding property within PUDs (Planned  
Unit Developments)

Map Updated: November 2, 2017  
Current to Ordinance #608

0 0.25 0.5 0.75 1  
Miles





# Zoning Map (Non-Residential)

## Legend

- Residential - see reverse
- Agricultural Preserve (AG)
- Rural Residential-2 (RR-2)
- Mixed Use (MU)
- Uptown Hamel-1 (UH-1)
- Uptown Hamel-2 (UH-2)
- Public/Semi-Public (PS)
- Rural Public/Semi-Public (RPS)
- Business Park (BP)
- Business (B)
- Industrial Park (IP)
- Commercial-Highway (CH)
- Commercial Highway-Railroad (CH-RR)
- Commercial-General (CG)
- Rural Business Holding (RBH)
- Rural Commercial Holding (RCH)
- Sanitary Landfill (SL)
- PUD (Non-Res)

Please contact the Planning Department  
(763-473-4643) for more information  
regarding property within PUDs (Planned  
Unit Developments)

Map Updated: November 2, 2017  
Current to Ordinance #608

0 0.25 0.5 0.75 1  
Miles

